

Case Study

Commercial Leak Detection



Client Problem – Bombay Sapphire Gin Distillery had a hidden leak on a Yellow 100mm MDPE Commercial Gas Pipe. The pipe was buried 1.5m below ground and had been covered in reinforced cast concrete. The gas pipe had been installed in 250 meter run which ran under the distillery and under a small river, terminating at the end of the site, it was only possible to isolate the pipe at both ends of the 250 meter run. The new Distillery was in a near finished state and the client wanted to reduce damage and destruction to the site.

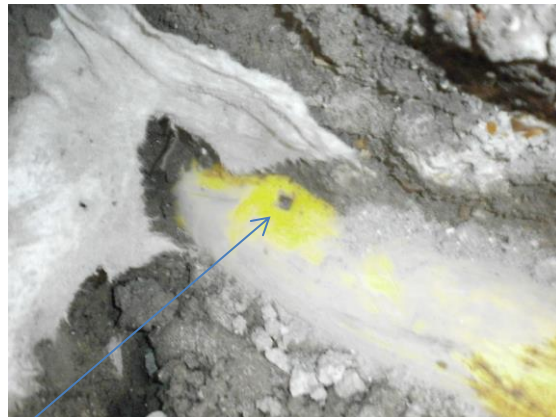
Our Solution – We carried out the following surveys.

Soundfind© Acoustic survey

This survey identified the location and depth of the hidden gas pipe

ZECT® Tracer agent Survey

We injected our exclusive TradeMarked Leak Tracing Agent and pressurised the gas pipe, we purged the pipe at the furthest point to ensure the pipe was full of our Agent. Using specialist technology we then waiting for the agent to escape from the leak (or leaks) on the gas pipe. It took approx 30 minutes for our Leak Tracer Agent to escape and penetrate through the 1.5meters of solid concrete. We then accurately identified the leak.



Leak identified on 100mm MDPE Gas Pipe

Dear Leakbusters

We had a major headache; Leakbusters accurately located a leak on a 100mm Yellow MDPE Gas pipe which was buried approx. 1.5m under reinforced concrete in a car park. You exceeded our expectations.

Thank you for the excellent service.

John Mounfield
Project Manager